



Easy  
Read

# Our plan for 2023 to 2030

The National Lottery Community Fund



# Easy Read



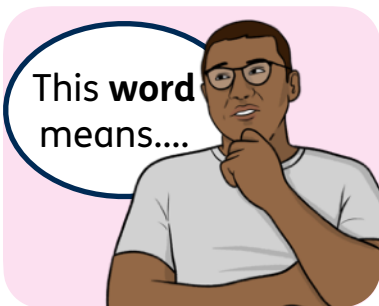
This is an Easy Read version of some information. It may not include all of the information but it will tell you about the important parts.



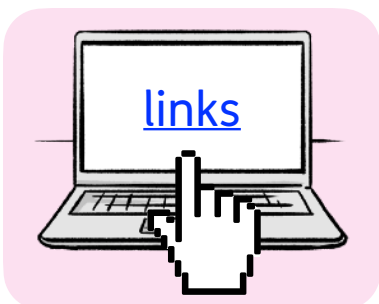
This Easy Read booklet uses easier words and pictures. You may still want help to read it.



Some words are in **bold** - this means the writing is thicker and darker.



These are words that some people will find hard. When you see a bold word, we will explain it in the next sentence.



Blue and underlined words show links to websites and email addresses. You can click on these links on a computer.

# What is in this booklet

About this booklet .....	4
About us.....	5
Our plan .....	9
How we want to work.....	17
The future.....	20
Find out more .....	21

# About this booklet



The National Lottery Community Fund supports projects in local areas.

We support projects by giving them:



- Money - this money is called funding.



- Help and advice.



We have written a plan about how we want to support projects over the next 7 years.



This is an Easy Read copy of our plan.

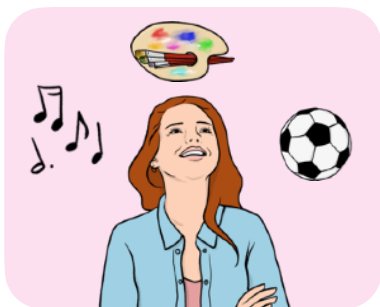
# About us

## Why we support projects

Projects help people:



- Get together and meet new people.



- Take part in activities.



- Make good changes to their local area.



- Feel happy and healthy.



Projects also help people feel included and like they belong in their local area.



We support projects so that they can help as many people as possible.

## How we support projects - funding



We mainly support projects by giving the team in charge of the project funding.

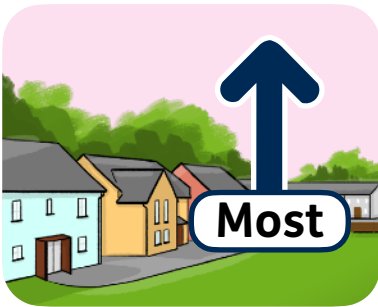


We have different types of funding.  
We work with project teams to decide which type of funding is best.



We like to give more funding to certain projects.

We try to give funding to projects that:



- Take place in areas that need the most support.

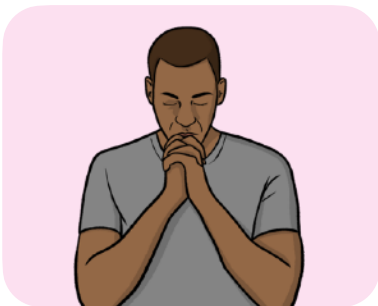


- Help and include people who deal with discrimination.

**People who deal with discrimination** are more likely to be treated unfairly. You could deal with discrimination because of:



- Your **race** – this is where you are from and the colour of your skin.



- Your religion or beliefs.



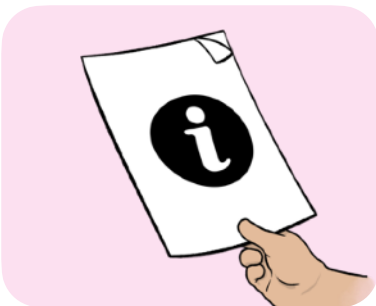
- Your **gender** – this is if you like to be known as male, female or something else.



You might also deal with discrimination because you have a disability.

## How we support projects - help and advice

We also support projects in other ways, like:



- Giving the project team information and advice on how to manage a project.



- Learning what local areas want and need and sharing this with project teams.



- Helping project teams work with other organisations, groups and businesses.



# Our plan

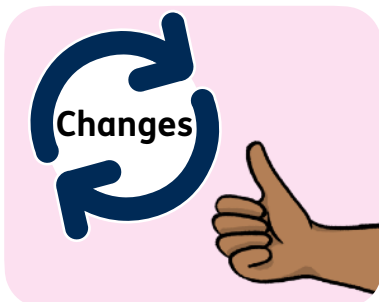


We have written a plan about how we want to support projects over the next 7 years.

We will support projects by:



- Giving more funding to smaller projects - smaller projects can now get £20,000.



- Helping projects to make good changes to local areas that will last in the future.



- Working with other organisations to give the best support we can.



- Working on our 4 **aims**.

**Aims** are what we want to achieve and do in the next 7 years.

# Our 4 aims

We want to:



1. Help people in local areas get together.



2. Help local areas to look after the **environment**.

The **environment** is where we live. It includes the land, the sea, the air and everything that lives in and on it. For example, plants and animals.

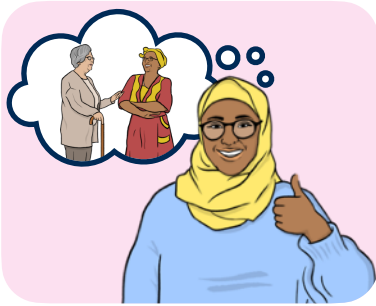


3. Support children and young people in local areas.



4. Help people in local areas to live healthy lives.

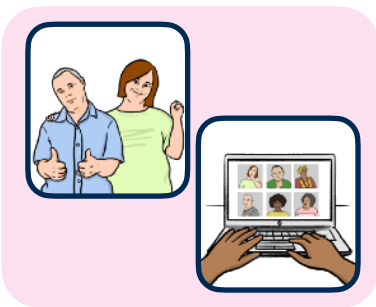
# 1. Helping people get together



Being around other people in your local area is important.

It makes people feel happy.

We will help people in local areas to get together by funding projects that:



- Help people to meet up with each other, both in person and online.



- Include fun activities that everyone can take part in.



- Make sure people from all backgrounds are included.



- Make people feel like they belong in their local area and trust the people around them.

## 2. Helping local areas look after the environment



Looking after the environment is important.



If we do not look after the environment then **climate change** will get worse and damage the earth.

**Climate change** is big changes in the weather. For example, storms getting worse than they used to be.



We will help all projects look after the environment, even if the project is about something else.



We will help local areas look after the environment by funding projects that work to lower the amount of bad gases that go into the air.



Bad gases in the air make climate change worse.

We will help local areas look after the environment by also funding projects that:



- Help the environment and keep it safe.



- Improve places with nature and keep them safe.



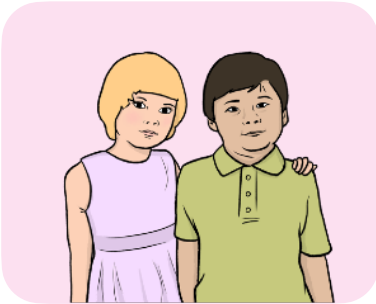
- Make sure everyone can access and enjoy places of nature.

### 3. Supporting children and young people

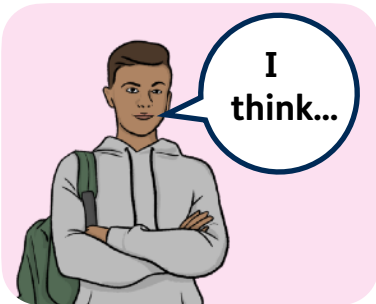
We want every child and young person to have the chance to:



- Take part in activities.



- Meet new people.



- Have their voice heard.



- Be included in decisions that will affect them and their future.

We will support children and young people in local areas by funding projects that:



- Give children and young people a safe place to play, meet new people or get support.



- Make sure children and young people from all backgrounds are included in activities in local areas.



- Help children and young people be included in decisions that will affect them and their future.

## 4. Helping people live healthy lives



We want people in local areas to have good physical and mental health.

We will help people in local areas to live healthy lives by funding projects that:



- Work to stop people from becoming unhealthy.



- Help people to improve their health.



- Work to make sure people from all backgrounds can access the help and care they need for their health and wellbeing.



- Help people be included in decisions about better care services.

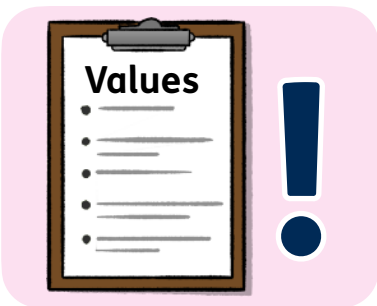


# How we want to work



As we support projects over the next 7 years we want to work in a way that is good for everyone.

## Values

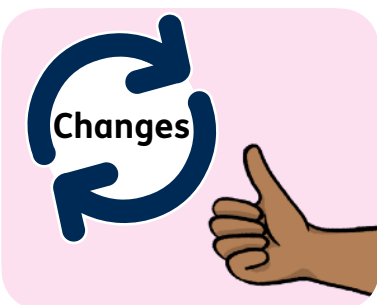


**Values** are the things that we think are most important. They help us to know how to behave and work.

We have 5 main values:



1. Include everyone.



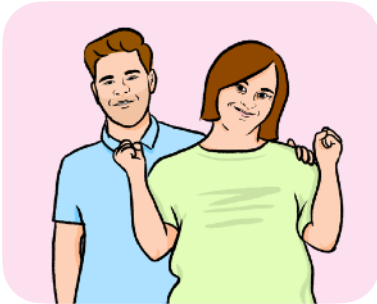
2. Support good changes that will last in the future.



3. Listen to what people want and need.



4. Be okay with new ways of working.



5. Work with care and respect for others.

## Ways of working



We have ways of working that help us make sure we are thinking about and following our values.

Our ways of working are:



- Listening to people and understanding that they know what their local area needs.



- Being honest and clear about our work and sharing information about it.

Our ways of working also include:



- Helping and funding projects in local areas that need the most support.



- Making sure we think about the environment when working and making decisions.



- Learning from what has worked and what hasn't.

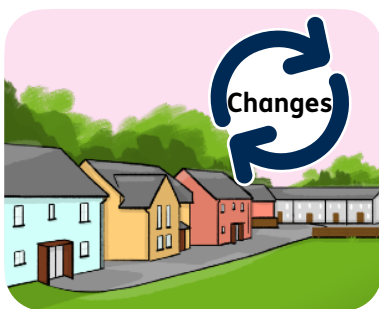


- Working with other organisations.

# The future



We want to carry on supporting projects and helping local areas after 2030.



We want to keep making good changes to local areas.



If you would like to be involved in making our plans for the future you can email us at:

[itstartswithcommunity@tnlcommunityfund.org.uk](mailto:itstartswithcommunity@tnlcommunityfund.org.uk)

# Find out more

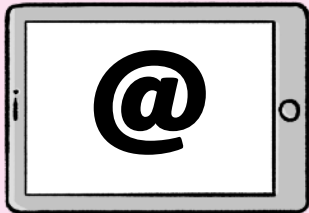


You can look at our website here:  
[www.tnlcommunityfund.org.uk](http://www.tnlcommunityfund.org.uk)

You can contact us by:



- Phone: 0345 410 20 30



- Email:

[itstartswithcommunity@tnlcommunityfund.org.uk](mailto:itstartswithcommunity@tnlcommunityfund.org.uk)

This Easy Read booklet was produced by [easy-read-online.co.uk](http://easy-read-online.co.uk)  
The booklet includes images licensed from Photosymbols & Shutterstock.